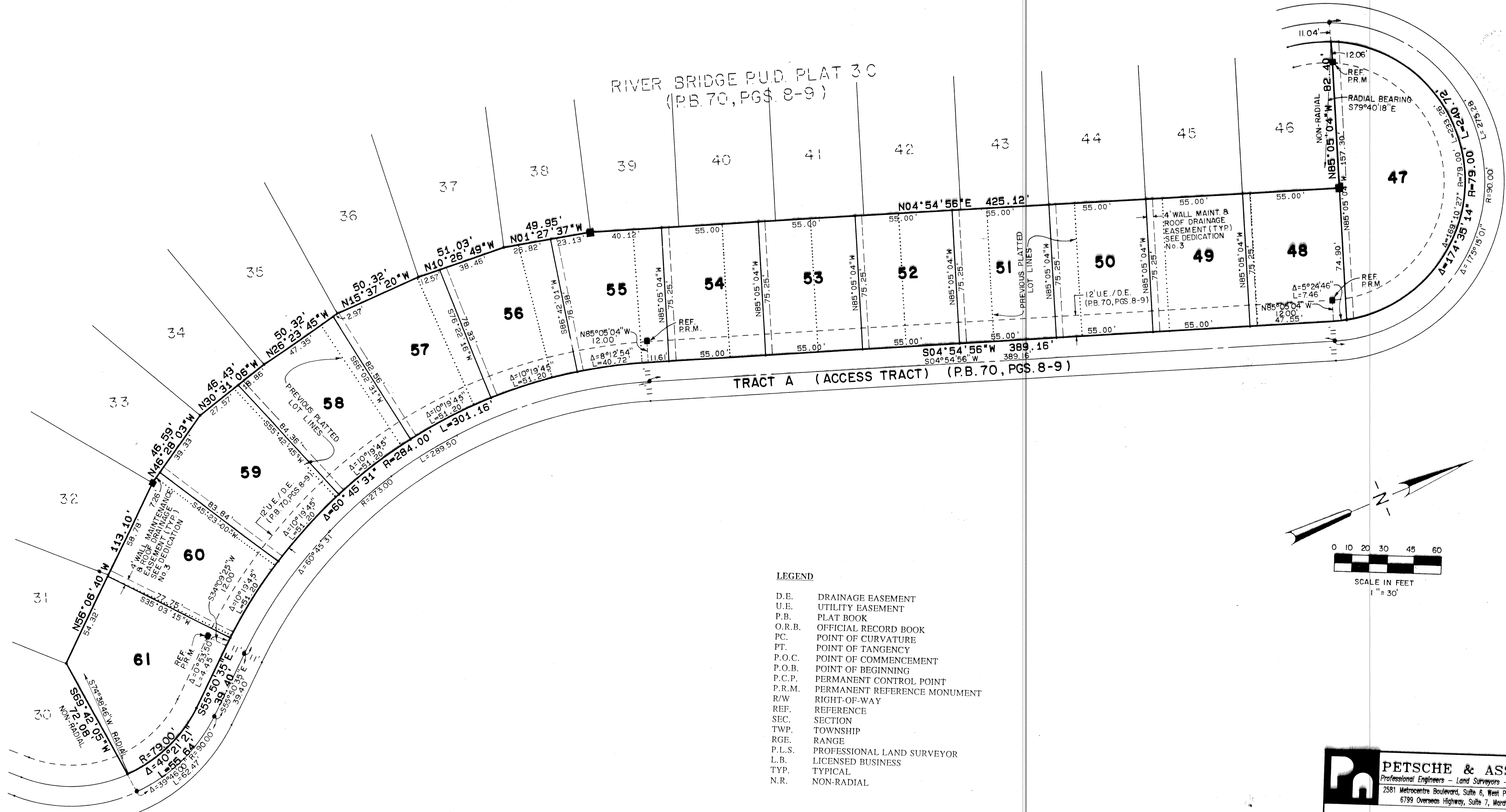


REPLAT OF LOTS 47-62 PLAT 3C RIVER BRIDGE P.U.D.

A REPLAT OF ALL OF LOTS 47 THROUGH 62 INCLUSIVE,
 RIVER BRIDGE P.U.D. PLAT 3C, (P.B. 70, PGS. 8 AND 9)
 LYING IN SECTION 15, TOWNSHIP 44 SOUTH, RANGE 42 EAST
 CITY OF GREENACRES, PALM BEACH COUNTY, FLORIDA.
 MARCH 1994
 SHEET 2 OF 2

44

STATE OF FLORIDA
 COUNTY OF PALM BEACH
 This plat was filed for
 record at _____, this
 day of _____, 1994,
 and duly recorded in
 Plat Book No. _____ on
 Pages _____ thru _____
 Clerk Circuit Court
 By: _____



- LEGEND**
- D.E. DRAINAGE EASEMENT
 - U.E. UTILITY EASEMENT
 - P.B. PLAT BOOK
 - O.R.B. OFFICIAL RECORD BOOK
 - P.C. POINT OF CURVATURE
 - P.T. POINT OF TANGENCY
 - P.O.C. POINT OF COMMENCEMENT
 - P.O.B. POINT OF BEGINNING
 - P.C.P. PERMANENT CONTROL POINT
 - P.R.M. PERMANENT REFERENCE MONUMENT
 - R/W RIGHT-OF-WAY
 - REF. REFERENCE
 - SEC. SECTION
 - TWP. TOWNSHIP
 - RGE. RANGE
 - P.L.S. PROFESSIONAL LAND SURVEYOR
 - L.B. LICENSED BUSINESS
 - TYP. TYPICAL
 - N.R. NON-RADIAL

SUBDIVISION: Riverbridge
 BOOK: 72
 FLOOD ZONE: _____
 CHAD: _____
 PUD NAME: c/greenacres

TAZ 339

PETSCH & ASSOCIATES, INC.
 Professional Engineers - Land Surveyors - Development Consultants - Testing Services
 2581 Metrocentre Boulevard, Suite 8, West Palm Beach, Florida 33407 (407) 640-3800
 6799 Overseas Highway, Suite 7, Marathon, Florida 33050 (305) 743-5788

REPLAT OF LOTS 47-62 PLAT 3C
 RIVER BRIDGE P.U.D.
 SECTION 15, TOWNSHIP 44S., RANGE 42E.
 CITY OF GREENACRES, FLORIDA

Drawn by: _____ Date: SEPT. 1993 SCALE: 1" = 30' JOB NUMBER: SHEET OF
 Designed by: _____ Checked by: _____